



CORROSION-RESISTANT ALTERNATIVE PIPELINE



POLY-LINED • STAINLESS STEEL • ALUMINUM

Zimmatic[™]
STRENGTH TO GROW ON



Corrosion-Resistant Alternative Pipeline

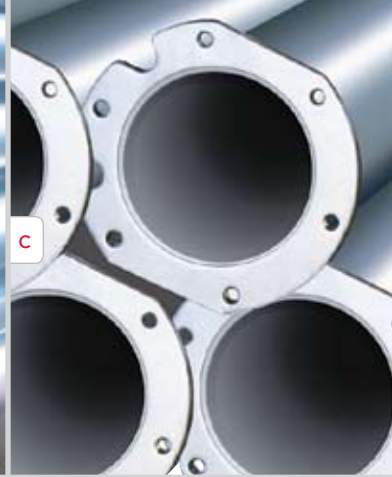
Zimmatic® offers long-lasting pipeline solutions for corrosive water conditions such as process water and wastewater. High-quality materials and heavy-duty construction will provide trouble-free service year after year.

What characteristics make water corrosive?

- Acidic
- Alkaline
- Irrigation with high levels of chlorides, sulfates and salts
- Variable mineral content
- Crop management chemicals

Your Zimmatic dealer can help you decide which pipeline is right for your needs. A water sample analysis may be required to determine the best pipe material for the application.





Poly-lined (a)

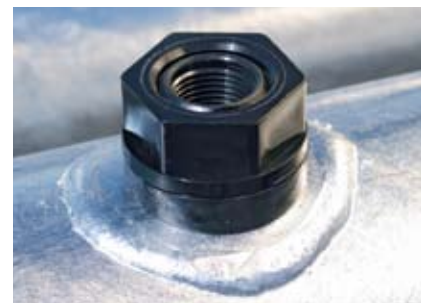
- The ideal choice for a variety of industries:
 - Food processing
 - Chemical
 - Textile
 - Mining
 - Pulp and paper
 - Municipal
 - Agricultural
- Excellent for both low and high pH irrigation water, processed water and farm chemicals
- Features Zimmatic's unique process for inserting an extruded poly liner into standard hot-dipped galvanized steel pipe
- Heavy-duty, high-density polyethylene (HDPE) liner can handle corrosive liquids including saline and acidic water
- Integrated flange seal eliminates the need for gaskets

Stainless steel (b)

- Perfect for long-term service in:
 - Sanitary systems
 - Dairy farms
 - Feed water heaters
 - Wastewater treatment plants
 - Food processing
 - Power plants (evaporators and heat exchangers)
- Good for water conditions that vary considerably (i.e., pH levels in food processing effluent can change from high to low frequently and the elements in the water change as the process changes)
- High-alloy steel offers the highest available level of corrosion resistance
- Offers potentially higher resale value

Aluminum (c)

- Provides superior corrosion resistance compared to galvanized machines
- A good option for process water and livestock wastewater applications
- Incorporates the same long-lasting structure and driveline as standard Zimmatic machines
- Ultra-smooth interior surface offers less friction loss for greater efficiency



Corrosion-resistant, heavy-duty plastic outlet for poly-lined pipe.

Specifications

Poly-lined

- ASTM A-513 11-gauge steel
- Hot-dipped galvanized to ASTM 123-73 specifications
- 6.625-inch (16.8 cm) outer diameter
- 6.0-inch (15.2 cm) inner diameter
- High-density HDPE liner
- Specially-formed flange design allows pipe to be joined to form a continuous leakproof liner throughout the span
- Sprinkler outlets are specially designed to accept 1/2-inch (1.27 cm) NPT-14, TPT
- Special outlet for harsh conditions is water-tight for trouble-free operation

Stainless steel

- Type 304L steel
- ASTM A778-30L
- 6.625-inch (16.8 cm) outer diameter
- 6.407-inch (16.3 cm) inner diameter
- Zimmatic joints are 100% stainless steel
- All water-carrying structural components at pivot points are 100% stainless steel

Aluminum

- High-grade, high-alloy aluminum
- Schedule 10 aluminum
- 0.134-inch wall (0.35 cm)
- 6.625-inch (16.8 cm) outer diameter
- 6.357-inch (16.2 cm) inner diameter
- Zimmatic joints are 100% stainless steel
- All water-carrying structural components at pivot points are 100% stainless steel
- Weld-on sprinkler outlets have specially reinforced base for long life

**Find out how corrosion-resistant pipeline can benefit your operation.
Visit www.zimmatic.com or talk to your Zimmatic dealer.**

Zimmatic™
STRENGTH TO GROW ON

2222 N 111th St., Omaha, NE 68164 • 1-800-829-5300 • 1-402-829-6800 • www.zimmatic.com